

HYCU Protégé for O365



About HYCU

Global Offices HQ'd in Boston



Partnerships with leading HCI
and cloud vendors
Top rated product and support

Data Protection DNA



Leverage experience developing
industry leading products
to create an innovative new platform

Multi-cloud support



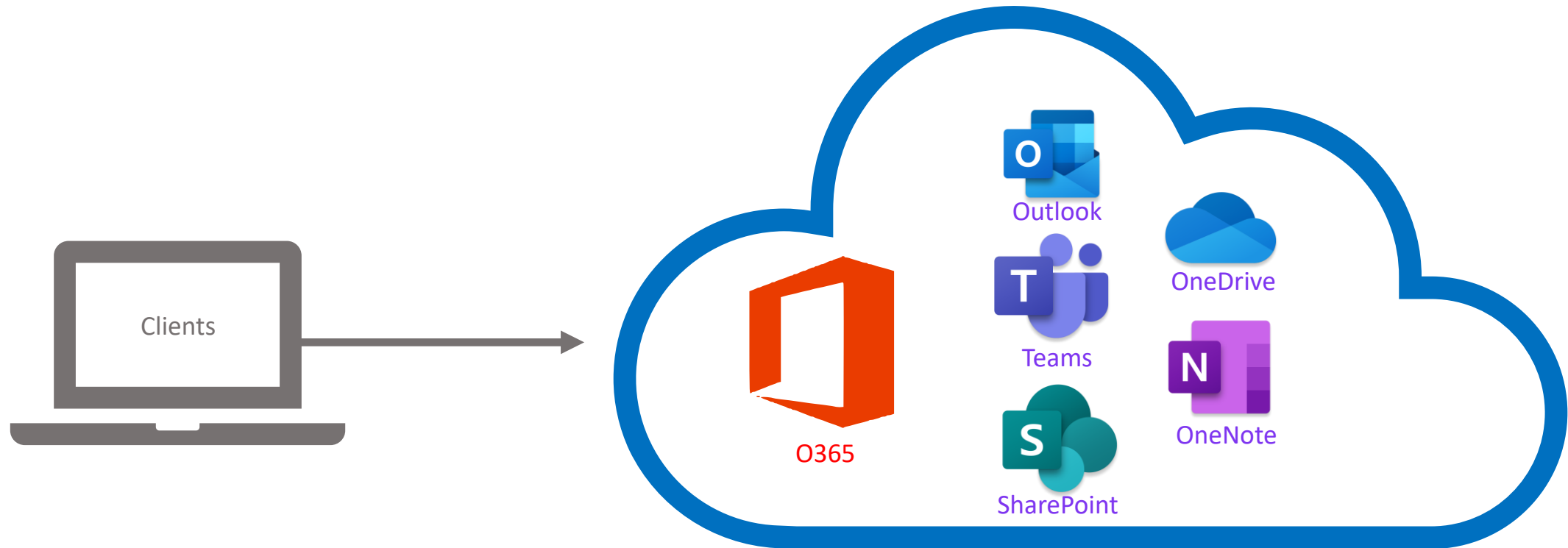
Purpose-built For Private
and Public Cloud
Simplicity

Worldwide Customer Base



Customers in over
75 Countries with more
than 2500 customers

What is O365?



Why O365 needs to be backed up?

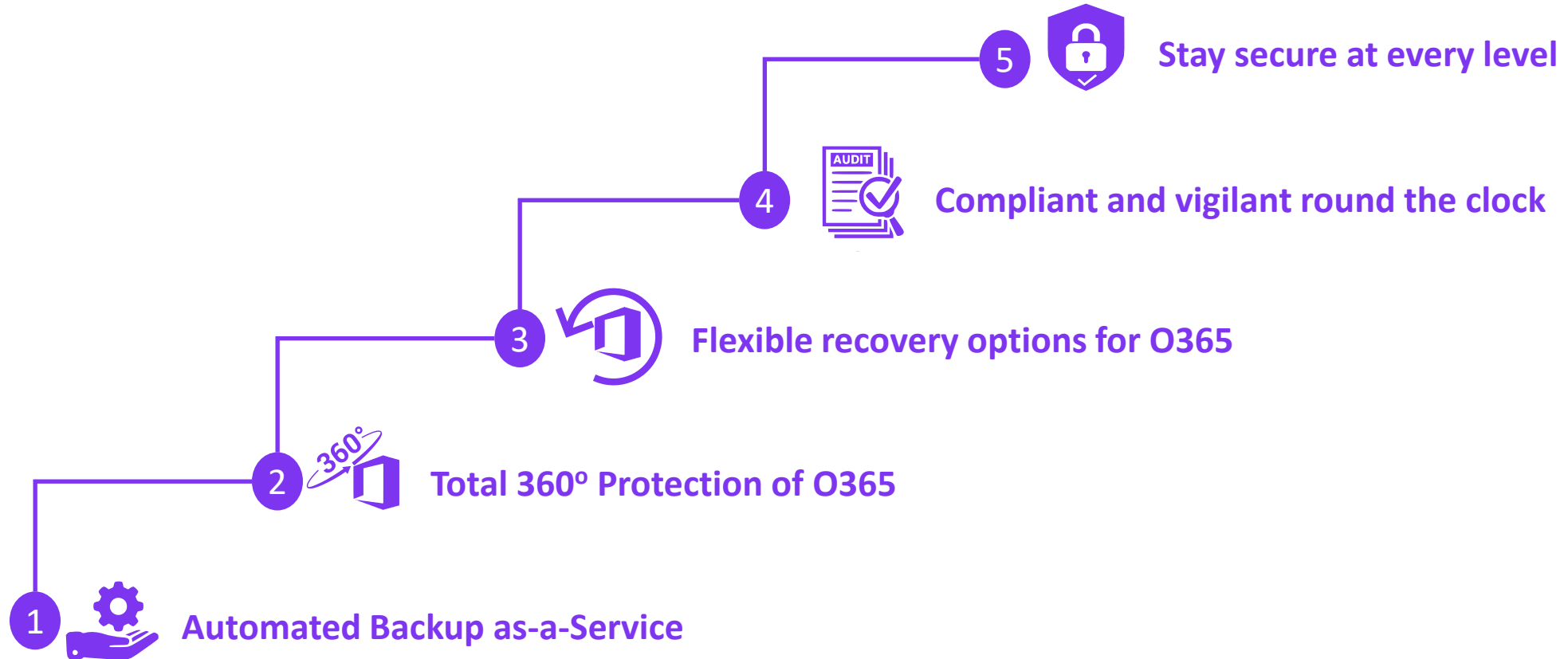
- Protects against accidental or malicious modifications/deletions
- Need to be compliant with legal obligations for retaining data (especially communication data) for longer periods of time
- Even Microsoft agrees you need to backup O365

Section 6.b

b. We strive to keep the Services up and running; however, all online services suffer occasional disruptions and outages, and Microsoft is not liable for any disruption or loss you may suffer as a result. In the event of an outage, you may not be able to retrieve Your Content or Data that you've stored. We recommend that you regularly backup Your Content that you store on the Services or store using Third-Party Apps and Services.

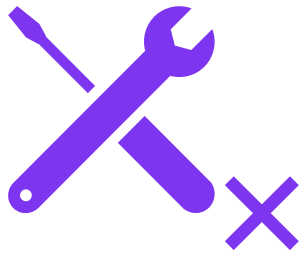
HYCU Protégé for O365

5 Core values



Automated Backup as a Service

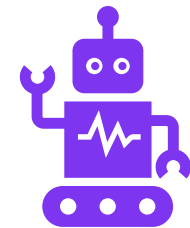
Save time, energy and money by simply subscribing to our service, select what to backup, sit back and relax.



Zero maintenance, **zero** upgrades and **zero** deployment requirements with HYCU's DPaaS



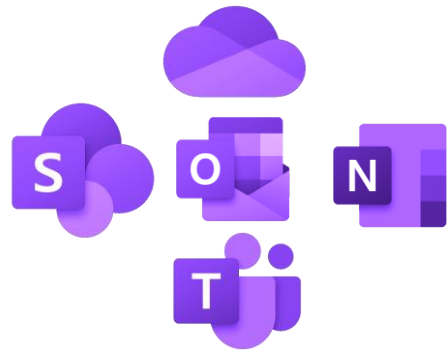
No need for sizing and planning exercises with HYCU's dynamic scaling architecture



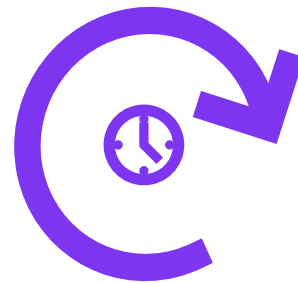
Zero backup management with HYCU's auto scheduling and backup target provisioning

Total 360° Protection of O365

Protect your entire O365 from data corruption, malicious deletion and malware/ransomware attacks



Protect all components of O365 which includes emails, SharePoint, OneNote, OneDrive, Teams



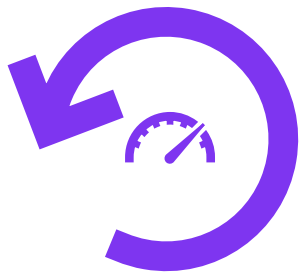
Continuous backup of emails with journaling; 1x a day for OneDrive and 3x a day for SharePoint



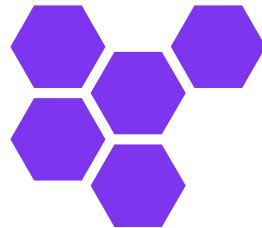
Unlimited data retention by default to AWS S3 with customizable retention options

Flexible recovery of O365

Easily recovery your O365 assets from any data loss situation that can threaten your business



Easy and fast recovery emails, attachments, contacts, calendars, tasks. + email migration



Granular and full recovery of OneDrive (files), SharePoint (sites), Groups and Teams



Advanced *search and recover* functionality for Email, OneDrive and SharePoint

Compliant and vigilant round the clock

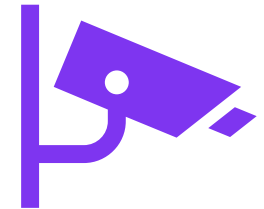
Keep tabs on your email activity to ensure the safety of your business critical and proprietary data



Detailed audit trail of email backups, searches, downloads, deletion and much more!



Suspend email expiration on demand for situations like ad-hoc legal audit



Keep constant track of email correspondence and analytics between senders and recipients

Stay secure at every level

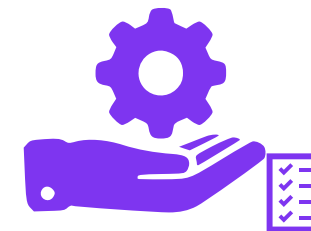
Safeguard from risks and costly penalties by ensuring backup compliance of all your O365 assets



Supports In-transit and At-rest encryption TLS 1.2, AES-256, FIPS-2 certified Amazon KMS

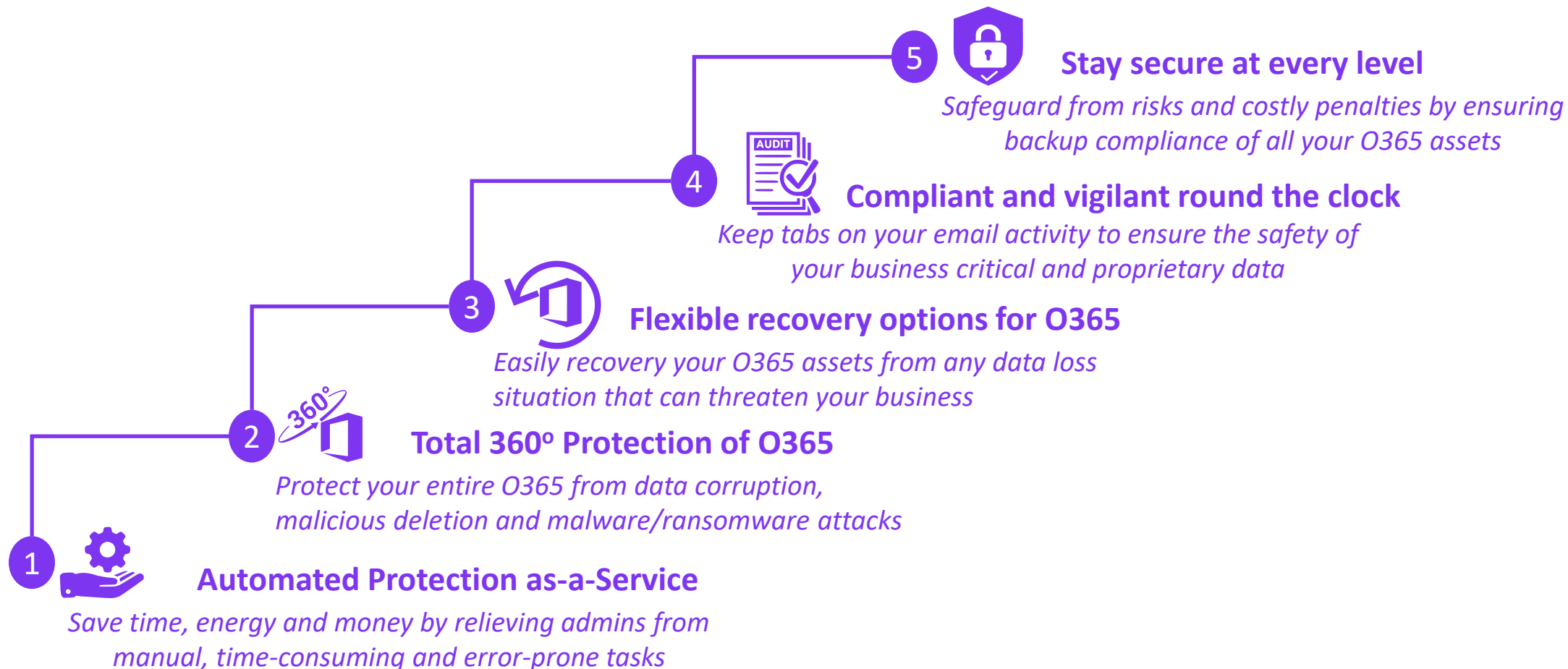


Backup target compliance: SOC 1,2 and 3, ISO27001, FedRAMP, FISMA, DIACAP, DOD CSM Levels 1-5 FIPS 140-2



HYCU Solution compliant with: HIPAA, GDPR, PDPA(Singapore), Australia privacy act

Why HYCU Protégé for O365?



Introducing HYCU Protégé for O365



Thank you
